



## 1. Product Name

Aquatic Bubble Tube by ROMPA®

## 2. Product Code

504805 - 175cm

504806 - 200cm

## 3. Colour

White base

## 4. Brief Description

Watch the multi-coloured fish 'swim' up and down. A robust, safe and multi-sensory Bubble Tube by ROMPA® that can be used non-interactively and interactively, including wirelessly. Available in 4 heights, this bubble tube has changing colours.

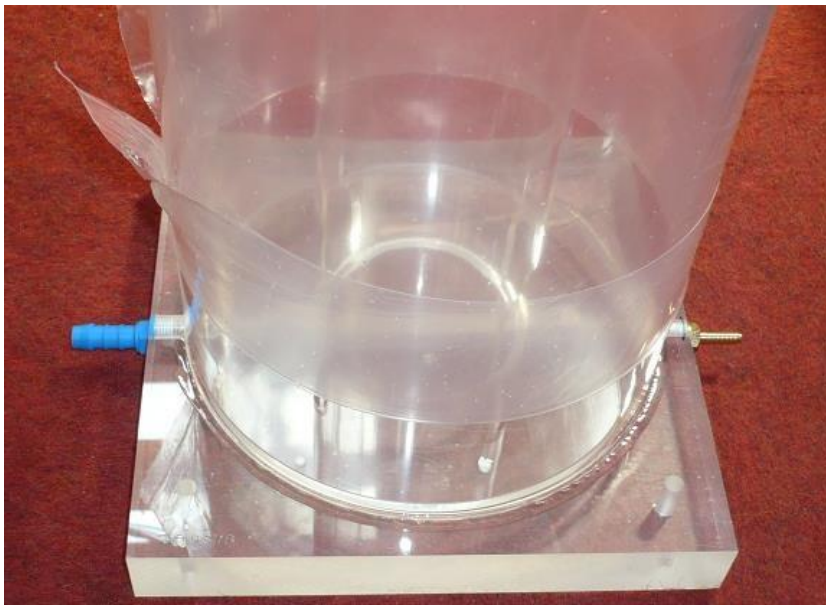
## 5. Contents

Base Unit (chassis)



Base Cover (white plastic cover)

Bubble Tube Column



Bubble Tube Cap (shown in the image above next to the chassis and cover)

Power Supply (black box)

Drainage tube (supplied inside the chassis)

Fish

Protective socket cover (supplied in the RJ45 socket of the base)

## 6. Snoezelen® Stimulations

- Touch
- Sight
- Sound

## 7. Best Use

For best effect, use in a darkened room with a collar for safety and a Wi Fi controller for wireless interactivity.

## 9. Starting Up

- Place on a flat, stable floor that is capable of holding the weight of this product.
- Remove the plastic base cover from the base unit.
- Fit the bubble tube column to the base using the large screws provided. Note the location of the valves before screwing in place – orientate the column so the pipes are near to their corresponding valve. See below.
- Attach the cloudy plastic pipe to the blue valve on the Bubble Tube Column and the brown plastic pipe, which is already attached to the pump, to the metal valve at the bottom of the Bubble Tube Column.
- Check the lights are working before filling with water.
- Fill with clean water carefully until the required level is achieved (approximately 5cm from the top of the tube). We strongly recommend that you use the drainage tube and a filling pump (e.g. ROMPA®'s 20908) to fill the bubble tube from the bottom of the tube, rather than pouring water into the top of the tube. Whilst the components inside the chassis have some protection against spills and splashes, the best way to avoid water accidentally entering the chassis is to fill the bubble tube using the drainage valve.
- Put the fish into the column, then put the bubble tube cap on top of the bubble tube.
- Remove protective plastic film from the Bubble Tube column.

## 10. Detailed Description

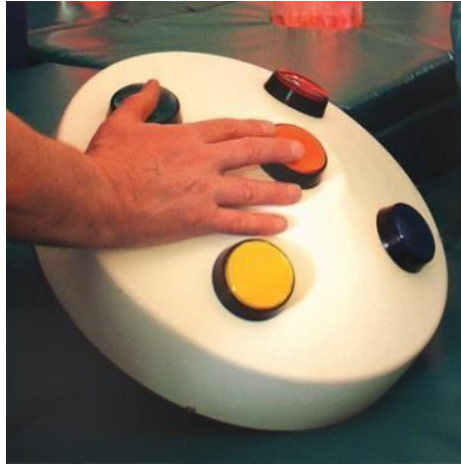
Watch the multi-coloured fish 'swim' up and down. A robust, safe and multi-sensory Bubble Tube by ROMPA® that can be used non-interactively and interactively, including wirelessly. Available in 4 heights, this bubble tube has changing colours.

There are essentially three options when using your bubble tube:

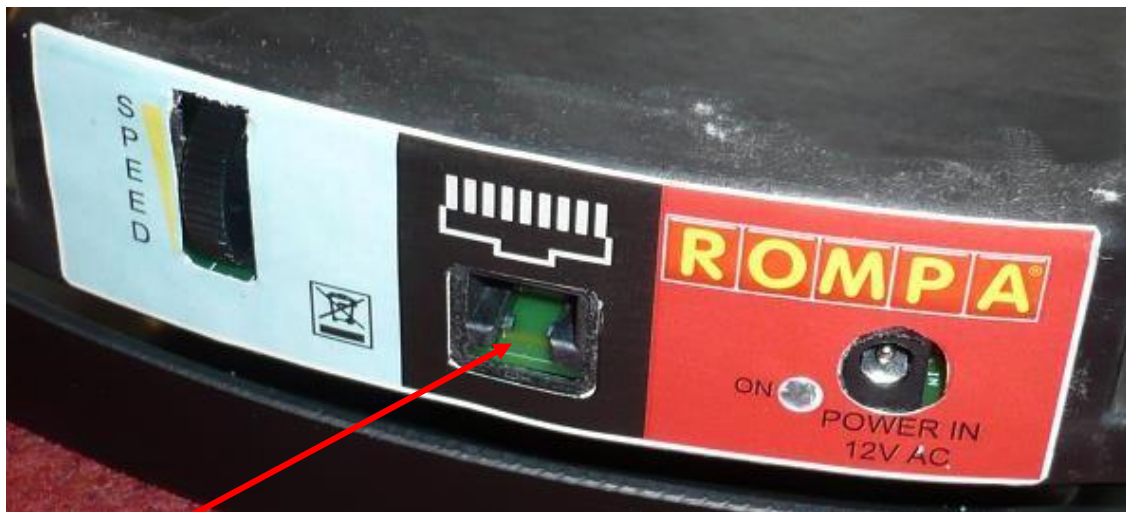
1. Allow your Bubble Tube to function passively – that is to say that the colours will change in sequence.
2. Use a round 5 button switch box to control bubbles and the 4 colours – red, blue, green and yellow. Please see [www.rompa.com](http://www.rompa.com) for details of this – 17274.
3. Use a Wi Fi controller to remotely control the Bubble Tube, such as the Talking Cubes, 8 Colour Wirefree Controller, Wi Fi Interactive Carpet Switch Set or Colour Changing Panel, Wi Fi Microphone: When used in conjunction with Wi Fi products, the Bubble Tube will be lit in the colour chosen by the user. These controllers allow a choice of up to 8 colours to be selected.

## USING THE SUPER INTERACTIVE SWITCH BOX 17274

*(to be purchased separately)*



Switch off the Bubble Tube completely. Connect the 5 Button Switch Box to the base of the Bubble Tube (the socket to the right of the SPEED dial).



**RJ45 socket**

- To select a coloured light press one of the four buttons (red, green, yellow, blue) on the top. The selected colour will only be activated for a few seconds (the exact time depends on how you have set the SPEED and DELAY buttons) before the cycle of colours resumes. The selected colour will not remain indefinitely till another colour is selected using the switch box. Experiment with the SPEED and DELAY buttons until you find a setting that best suits your requirements. For example, set SPEED to a minimum to keep the colour change as slow as possible.

- To stop the bubbles press the central button on the top. Release the button to make the bubbles start again. On the underside of the Switch Box there is a dial labelled BUBBLES with two options – NORMALLY ON and NORMALLY OFF. Switch between these so that one way the bubbles start if the central button is pressed and the other way the bubbles will stop if the central button is pressed.
- To adjust the speed of the light change/flash rate use the SPEED and DELAY buttons underneath labelled COLOURS.

**YOU CAN ADD AN EXTERNAL SWITCH (JACK)** – When a ROMPA<sup>®</sup> switch is plugged into the Jack Socket on the side of Push Button Switch Box, most other controls will be over-ridden, i.e. Push Buttons, Colours etc.



There are nine possible options when a ROMPA<sup>®</sup> switch is used. Use the dials on the underside of the Super Interactive Switch Box:

1. With the left hand dial set to COLOURS and the right hand one to FLASH ON, then the Bubbles will be on all of the time and the Lights will come on when the ROMPA<sup>®</sup> switch is activated.
2. With the left hand dial set to BUBBLES and the right hand one to FLASH ON, then the Lights will be on all of the time and the Bubbles will come on when the ROMPA<sup>®</sup> switch is activated.
3. With the left hand dial set to COLOURS and the right hand one to FLASH OFF, then the Bubbles and Lights will be on all of the time and the lights will stop when the ROMPA<sup>®</sup> switch is activated.
4. With the left hand dial set to BUBBLES and the right hand one to FLASH OFF, then the Bubbles and Lights will be on all of the time and the Bubbles will stop when the ROMPA<sup>®</sup> switch is activated.
5. With the left hand dial set to COLOURS and the right hand one to HOLD, then the Bubbles will be on all of the time and the Lights will start when the ROMPA<sup>®</sup> switch is activated and will only stop when the ROMPA<sup>®</sup> switch is activated again.
6. With the left hand dial set to BUBBLES and the right hand one to HOLD, then the Lights will be on all of the time and the Bubbles will start when the ROMPA<sup>®</sup> switch is activated and will only stop when the ROMPA<sup>®</sup> switch is activated again.



7. With the left hand dial set to BOTH and the right hand one to FLASH ON, then the Bubbles and Lights will be off and they will only come on when the ROMPA<sup>®</sup> switch is activated.
8. With the left hand dial set to BOTH and the right hand one to FLASH OFF, then the Bubbles and Lights will be on all of the time and the Lights and Bubbles will stop when the ROMPA<sup>®</sup> switch is activated.
9. With the left hand dial set to BOTH and the right hand one to HOLD, then the Lights and Bubbles will be on all of the time and both will stop when the ROMPA<sup>®</sup> switch is activated and will only start when the ROMPA<sup>®</sup> switch is activated again.

## 11. Safety

- **Always supervise the use of this product**
- Please check equipment immediately for any damage that may have resulted during shipping and contact ROMPA<sup>®</sup> immediately if there are any problems.
- The layout of the activity area, proper installation and maintenance of your equipment is critical; make sure the product is used in a safe and appropriate place and way.
- Do not attempt to move the Aquatic Bubble Tube while filled with water.
- Please ensure that no water comes into contact with the circuit boards in the base of the Aquatic Bubble Tube.
- Take extreme care when filling/emptying the Aquatic Bubble Tube to ensure the electronics remain dry.
- Always disconnect the power cables when filling/emptying the Aquatic Bubble Tube
- The Aquatic Bubble Tube is suitable for use on a level horizontal floor. Do not attempt to move the Aquatic Bubble Tube when it is full of water.
- Do not insert anything into the bubble tube base other than the power supply provided and a 17274 Interactive Switch Box.

## **12. Technical Specification**

Base height: 11cm  
Tube Diameter: 15cm  
Base Diameter: 51cm

*Note: please take total height into consideration if requiring a Canopy when your ceiling is low*

Pump: Schego type WS3

Power Supply: 230 Volt

Input 230V Output 12V AC 60W

(The power supply is UL listed – E1494743G58, and meets the requirements of BS EN61558-1 and BS EN61558-2-6)

Power cable: 5.15m approximately

## **13. Installation**

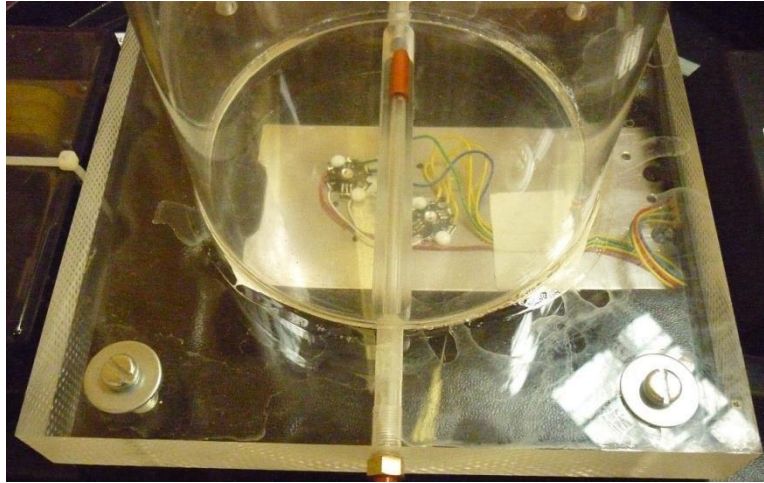
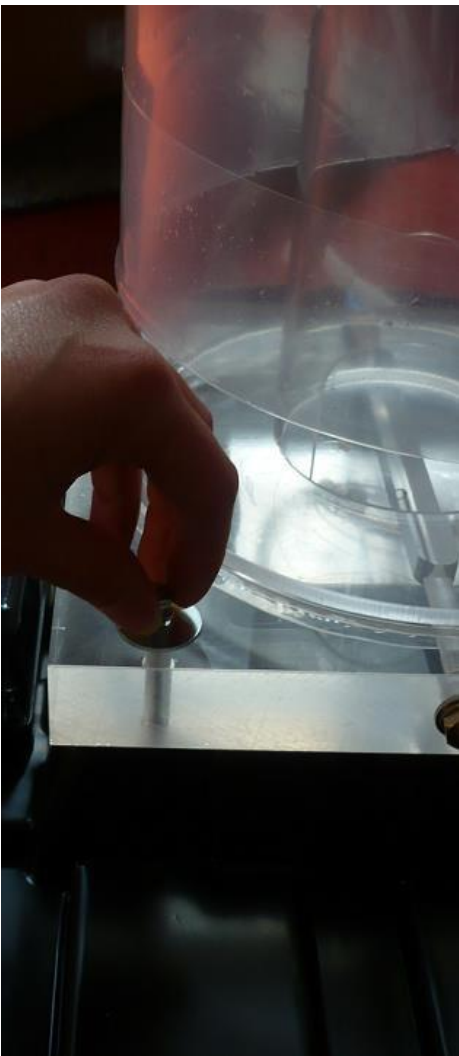
1. Place on a flat, stable floor that is capable of holding the weight of this product.
2. Remove the plastic base cover from the base unit. Loosen the screws around the perimeter of the base cover, but do not remove them. Slide the base cover free of the screws.



3. The bubble tube column needs to be fitted to the base unit using the four screws provided (shown below on top of silver-coloured washers). Note the location of the valves before screwing in place – orientate the column so the pipes are near to their corresponding valve. See point 5.







4. Attach the cloudy plastic pipe to the blue valve on the Bubble Tube column.



5. Attach the brown plastic pipe, which is already attached to the pump, to the brass valve at the bottom of the Bubble Tube column.



6. Replace the plastic base cover. If the Bubble Tube is to be used in a Cushioned Platform (padded base), the Base Cover (white plastic cover) may be removed and discarded.
7. Check the lights are working before filling with water. Place the Bubble Tube in its final position as it cannot be moved when full. The Bubble Tube should now be placed on a stable, level surface in preparation to be filled with water. If the surface is not flat, the pump is likely to create more noise than a gentle background 'humming'.
8. Fill with clean water carefully until the required level is achieved. This should be approximately 5cm (2 inches) from the top of the tube. The water level will rise when switched on. Approximate amount of water required: 45 litres. We strongly recommend that you use the drainage tube and a filling pump (e.g. ROMPA®'s 20908) to fill the bubble tube from the bottom of the tube, rather than pouring water into the top of the tube. Whilst the components inside the chassis have some protection against spills and splashes, the best way to avoid water accidentally entering the chassis is to fill the bubble tube using the drainage valve. Make sure that the jug or bucket you are drawing water from is also clean. Put in the fish. Put bubble tube cap (lid) on top of the bubble tube.

9. Remove protective plastic film from the Bubble Tube column.



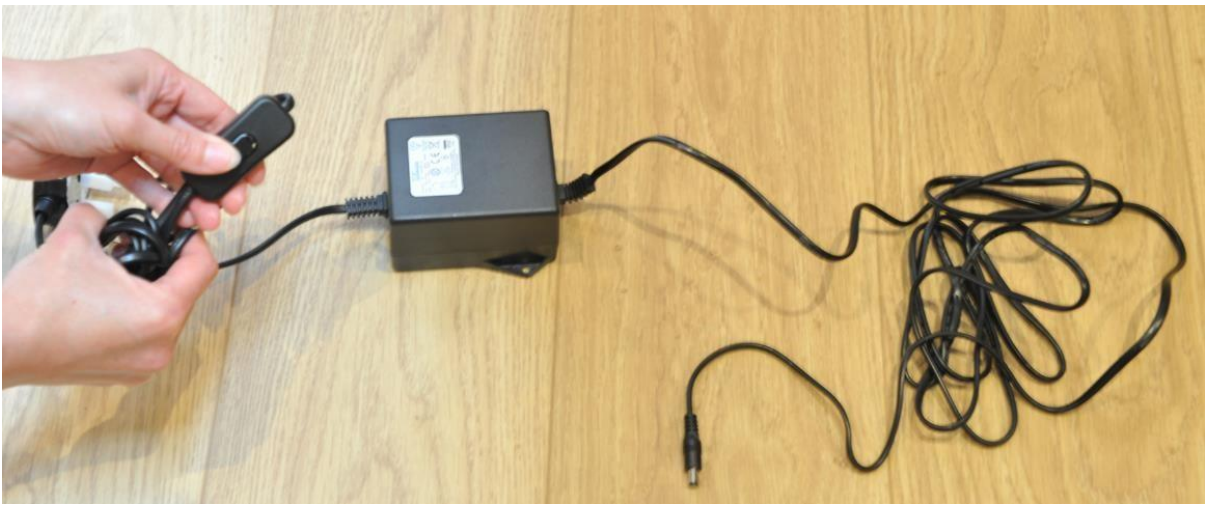
10. There are two screw holes on each side of the Power Supply should you wish to wall mount the unit, or secure it to the floor. Note: please wall mount in a well ventilated area. No fixings are supplied as these depend on the surface the unit will be attached to. The Power Supply box weighs 1.3kg.

*Please note:* image (right) shows a 110V plug – the plug supplied will be appropriate to the country of the customer

11. Plug the Power Supply into the POWER IN 12V AC socket of the bubble tube using the jack plug supplied.



12. Plug the other end of the Power Supply in at the wall.
13. Switch on at the wall. Switch on the rocker switch on the cable. The green LED light will be lit. There may be a slight delay.



14. The unit will begin to flash, displaying a sequence of coloured lights, and bubbles will begin to rise up the tube. Turn the wheel labelled 'SPEED' on the white Base Cover to adjust the speed of the light change.



You may wish to use a collar to secure your bubble tube to the wall. The collar 14694 is appropriate for these bubble tubes. We recommend the use of a collar to prevent the bubble tube from being pulled over. Attach your Collar to the wall, to secure the top of the bubble tube.



## 14. Care and Maintenance

- Regularly change the water and use a suitable water cleansing agent (e.g. BCB Fluid)
- The environment the aquatic Bubble Tube is in will affect how often the water needs to be changed. Bubble tubes in dark, damp environments with minimal ventilation will need changing at a different frequency to those in bright, well-ventilated rooms. Changing the water monthly is a good starting guideline.

- Plan for holidays. For example, if the bubble tube will be switched off for long periods, empty the water out. You do not want to return from a long holiday to find the water is green and unpleasant!
- If the tube is used in an area where lime-scale in water is a problem, it may be advisable to use an appropriate water softener
- Failure to cleanse your bubble tube water and/or use an appropriate water softener can block the valves of the bubble tube and so encourage product failure.
- Do not add bleach, coloured dyes or salt to the water
- Once this product is eventually exhausted, please dispose of it appropriately and responsibly.

#### **TO EMPTY THE AQUATIC BUBBLE TUBE**

□ Use the drainage tube provided (see below).



Connect this tube to the white socket on the bubble tube base, next to the POWER IN socket. Push the end with the black stripe into the white socket till you hear a click to indicate that it is secure. Make sure the other end with the tap is in a suitable container to take the water. Turn the tap to release the water.

**ALWAYS CLOSE THE TAP AFTER EMPTYING THE BUBBLE TUBE.**  
**REMOVE THE DRAINAGE TUBE AND KEEP IT IN A SAFE PLACE.**



To remove the drainage tube, push on the grey button to release the tube. Removing the drainage tube automatically seals the cloudy pipe of the bubble tube. Empty any water that has remained in the drainage tube. Keep a piece of paper towel to hand to place under the white socket to catch the small amount of water that can be released.

Disconnecting the drainage tube:



Connecting the drainage tube to the filling pump tube (to be purchased separately):



Connecting the filling pump to the bubble tube power supply:



Before using the tap on the drainage tube, make sure you are aware how turning the tap opens and closes the tube:

OPEN:



When the tap is closed, you will not be able to see down the tube.

- Alternatively, use an appropriate pump. Remove the cap (round lid at the top of the tube) and remove the water from the top of the tube using your pump. A pump is available separately from ROMPA®: code 20601. This pump can also be used to fill your bubble tube.

#### **GENERAL CARE**

- Wash the exterior of the Aquatic Bubble Tube with a slightly soapy cloth. Wipe excess soap away with a damp cloth. **NOTE:** Never use solvent based cleaning products, methylated spirits, alcohol wipes or liquid detergents to clean the Aquatic Bubble Tube.

When you need to switch the bubble tube OFF after use, or before maintenance (e.g. before changing the water) please note that:

- There is no ON/OFF switch on the bubble tube itself, or on the power supply shown below.
- Power should be disconnected by removing the mains plug from the wall socket. Do not disconnect the jack plug of the power supply from the round POWER IN 12V AC socket at the base of the bubble tube. Repeatedly disconnecting the jack plug from this round socket is likely to lead to damage to the bubble tube, and should also be avoided for safety reasons.

## 15. Troubleshooting

In the unlikely event of product failure, please check the following:

***Problem: No lights, no bubbles***

- Check that the bubble tube is plugged in at the wall and that the power supply is connected
- Check the green LED light is on

***Problem: Lights but no bubbles***

- Try switching the bubble tube off and then again
- Check all pipes are firmly connected and free of kinks/bends. Check the pipes have not worked free – occasionally vibrations/transportation can loosen pipes
- Have you connected a Super Interactive Switch Box (17274) to make your Bubble Tube interactive? Is the Switch Box firmly connected? Turn the Switch Box over – is it set to ‘Bubbles On’? If it is not, set it to this

***Problem: Super Interactive Switch Box does not work***

- Is the Switch Box firmly connected? Turn the Switch Box over – is it set to ‘Bubbles On’? If it is not, set it to this
- If this still does not work, it is possible that the pump has failed. Contact ROMPA® for advice

***Problem: Fish lie at bottom of tube***

- The tube must be on a flat, stable surface. Switch the bubbles ON then OFF to move the fish

***Problem: The bubble tube is very noisy***

- Make sure that the bubble tube is on a completely flat and stable surface, and not on a slope or uneven surface
- Make sure that the pump is still securely attached inside the chassis and that it has not worked free of the supports that hold it down

***Problem: The bubble tube is leaking***

- Fill and drain the bubble tube using the drainage tube and the valve with the grey button on the chassis – water can be accidentally spilled when filling the tube via the top.
- Make sure that all the tubing inside the bubble tube base is securely attached • Place paper towels in the chassis to identify exactly where the leak is coming from. Contact us for advice once the exact location of the leak has been found.

***Problem: There is debris inside the bubble tube***

- Use the cap as a lid for the bubble tube column to stop dust, lint etc. falling into the tube
- Make sure no beads from the polystyrene packaging have fallen into the tube
- Keep the water clean by organising a regular cleaning schedule to avoid the growth of algae. Use BCB Fluid to keep the water clean.